



# **aerooco** GROUP

DELIVERING EXCELLENCE IN

MAINTENANCE | MANUFACTURE | SUPPORT

# aerooco

## Our Mission

To provide exceptional engineering quality standards within the Aviation sector by inspiring our people to be the very best they can be, offering opportunity and professionalism at all times, leading to a reputation for outstanding customer service.

## Our Locations

### HEADQUARTERS

Manchester, United Kingdom

### OFFSITE MAINTENANCE SUPPORT TEAM

London Luton, United Kingdom

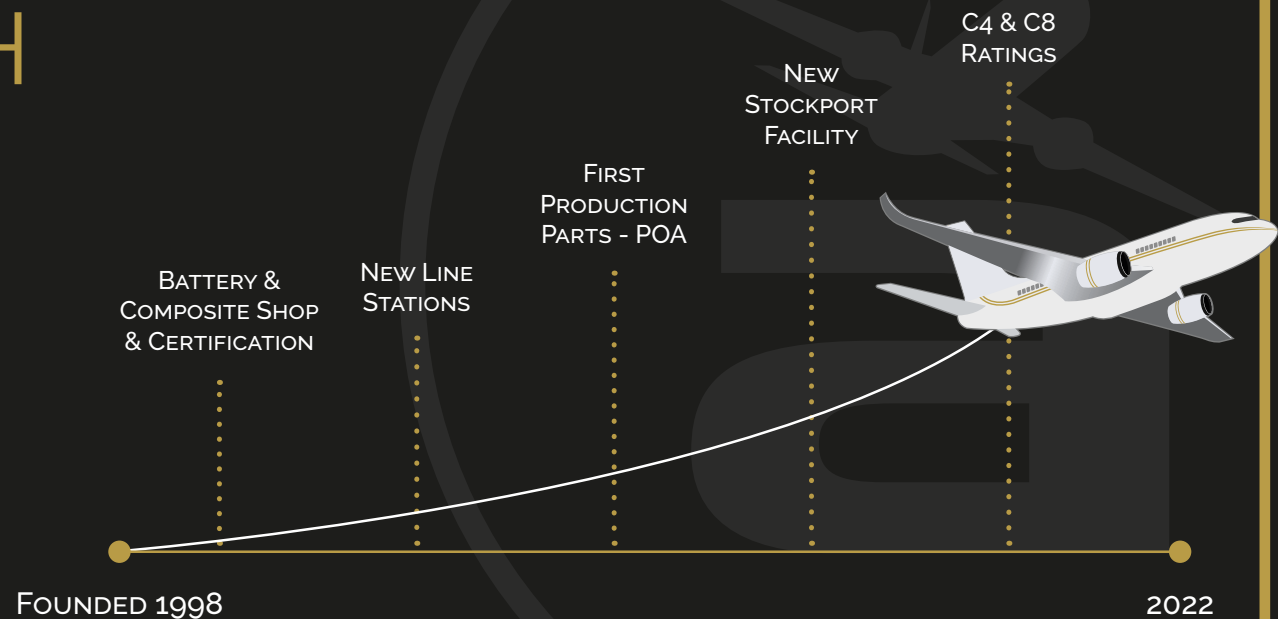
London Gatwick, United Kingdom

The Aerooco logo is displayed in a large, bold, sans-serif font. The letters are dark grey and have a subtle gradient. The 'a' and 'o' are particularly prominent. The logo is positioned in the bottom right corner of the slide, partially overlapping the 'Our Locations' text area.

# OUR FLIGHT PATH

Founded in 1998, Aeroco Group has continually expanded our support and services. Having started our journey with a focus on passenger seat maintenance and paint support, Aeroco Group now offers a full suite of repair, manufacturing and maintenance support services.

With a global customer base, Aeroco Group provides support to Airlines, MRO's and Leasing Companies within the commercial and private aviation sectors.



# OUR APPROVALS

Aeroco Group have a suite of approvals to cover all aspects of repair, maintenance and manufacturing.

EASA Part 145 approval no.	EASA.UK.145.01300
CAA Part 21 sub-part G approval no.	UK.21G.2655
FAA 145 approval no.	V35Y340X
TCCA 145 approval no.	813-42
ISO 9001:2015	11737-QMS-001
CAA Part 145	UK.145.01300

- C1 Air Cond and Press
- C3 Comms and Nav
- C4 Doors
- C5 Electrical Power
- C6 Equipment
- C7 Engine – APU
- C8 Flight Controls
- C20 Structures



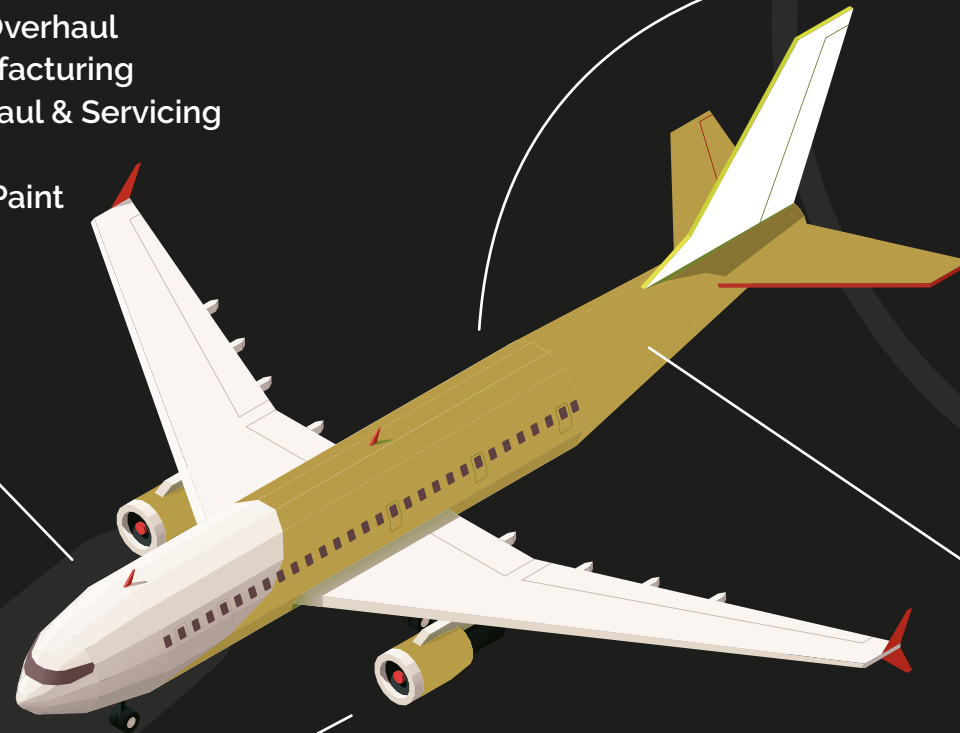
# OUR SERVICES OVERVIEW

## CABIN SERVICES

- Galley & Lavatory Repair & Overhaul
- Cabin panels Repair & Manufacturing
- PAX & Attendant Seat Overhaul & Servicing
- Carpet Manufacturing
- Overhead Bin Composite & Paint
- Decals & Branding

## MAINTENANCE SUPPORT

- On Wing Inspection
- Exterior Paint Touch-Ups
- Carpet Fitting
- NTF, Tedlar & Coin Dot Replacement
- Component Replacement
- Base & Line Cabin Support



## COMPONENT REPAIRS & SUPPLY

- Control Surfaces
- Engine Cowlings
- Thrust Reversers
- Radome
- Batteries
- Windows
- Crown Skins & Structure Modifications
- Flight Controls & Exterior Doors

## CARGO

- Floor & Sidewall Panel Repair
- Aftermarket Cargo Panels
- Cargo Door
- Loading Systems Components
- Decals

aeroco

# CARGO & CABIN COMPOSITE PANELS

Engineered from the highest specifications of conforming materials, we offer market leading support for both Airbus and Boeing panels. Supporting customers globally, our cabin and cargo panel services are aimed at offering the highest levels of cost efficiency and service.



## REPAIR SERVICES

Our service is based on receiving the removed, unserviceable cargo panels from the aircraft and repair the panel using the latest aviation specification, high-impact resistant, composite materials with reinforced upper facing that offer an overall longer serviceable, operational life.

## AFTERMARKET PANELS

Our UKPA approved panels offer an alternative solution to repair or purchasing directly from OEM. Supplied with full certification through a sub-part J Modification, the panels are constructed from approved materials and offer an efficient TAT and cost-effective solution.



# CABIN COMPONENTS



## CABIN MODULES

- INSPECTION
- DELAMINATION
- TEDLAR
- REPAIRS
- OVERHAUL
- MODIFICATIONS

Maintaining galleys, dry monuments, divider, lavatories and dado panels require a wide range of different skill set. Aeroco Group provide technical knowledge and industry leading experience to ensure complete confidence for our customers.

Overhaul packages are tailored to customer's needs, entirely compliant with component maintenance procedures, and can be carried out in-situ or off-wing in our Manchester based workshops.

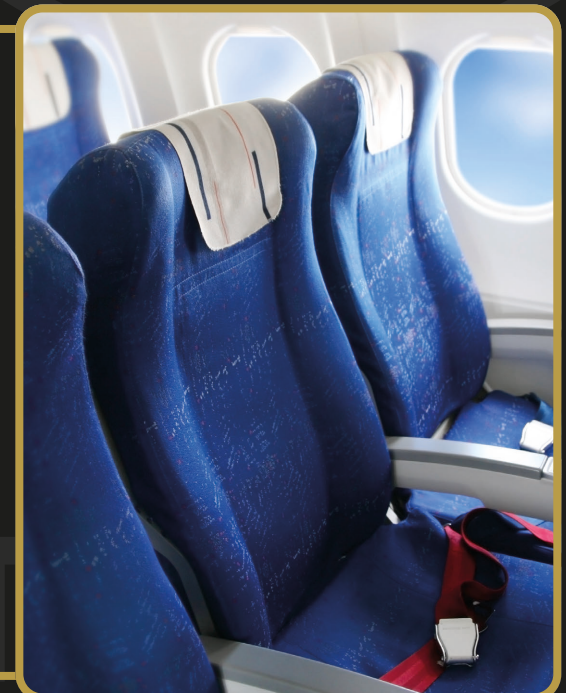
## PASSENGER, FLIGHT DECK & ATTENDANTS SEATS

- INSPECTION TO FULL OVERHALL
- SB IMPLEMENTATION
- SOFT & HARD FURNISHING DESIGN
- PROJECT MANAGEMENT

Our dedicated Seat Shop and specialist team of engineers can support a range of seat specific work.

Overhaul packages are tailored to customer needs, and range from SB implementation and general inspection to full overhaul and parts manufacturing.

Working alongside our engineers, our project management and technical engineering teams ensure regular communication with our customers for complete peace of mind.





## OVERHEAD HAT BINS

- INSPECTION
- FULL STRUCTURAL REPAIRS
- REBRANDING & PAINTING
- SIDEWALL & UPPER SECTIONS
- COSMETIC REPAIRS & REPAINT
- ALL OEM TYPES SUPPORTED

Aeroco Group facilitate a high number of both structural and cosmetic repairs for overhead bin interiors and doors.

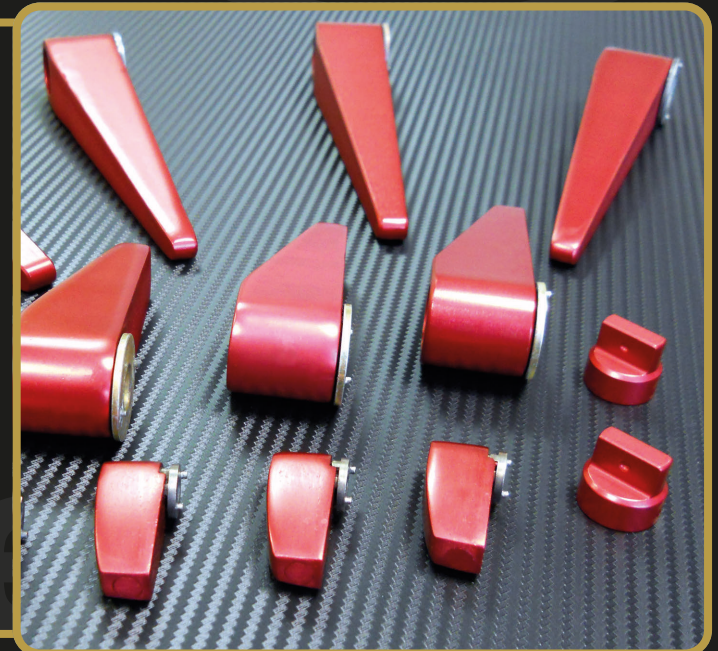
We have a dedicated team to fulfil these repairs and overhauls in situ or at our workshops in Manchester, and we have built a solid reputation for the work we provide to aviation's biggest operators.

## CABIN COMPONENTS

- COMPONENT OVERHAUL
- PARTS MANUFACTURING
- PAINTING
- DECALS & PLACARDS
- REPAIR SCHEME SUPPORT

Offering support on an array of component repair, our technical engineering team can support all your cabin component requirements.

From latches to seat components, the engineering team support all aspects of component maintenance including repair scheme design and implementation.



# TESTIMONIALS

*"Thanks for your support with the aircraft. The impressive turnaround time really helped us and the quality looks like they came from the OEM"*

JOB AIR TECHNIC

*"Your help was invaluable to us for this AOG case and we would like you to know that we really appreciate your support"*

AEGEAN AIRLINES

*"Absolute first class as always from the team at Aeroco"*

AJ WALTER

*"We have had the pleasure of seeing Aeroco's work on wing. Aeroco were able to support ACG by painting a large quantity of O/H Bin Doors and ceiling, and then further indirectly supporting ACG when it came to rectifying monument laminates that had bubbled post installation"*

AVIATION CAPITAL GROUP

*"We couldn't recommend Aeroco more highly"*

BOEING COMMERCIAL AVIATION SERVICES EUROPE





*"We have been working with Aeroco Group for a number of years, using their range of services. What has always impressed us is not only their commitments and dedication, but also the ability to deliver against challenging timelines throughout our network"*

EASYJET

*"Very engaged, proactive and flexible in meeting the Aer Lingus maintenance requirements providing a cost competitive offering with ability to meet our turnaround time demands and certification requirements"*

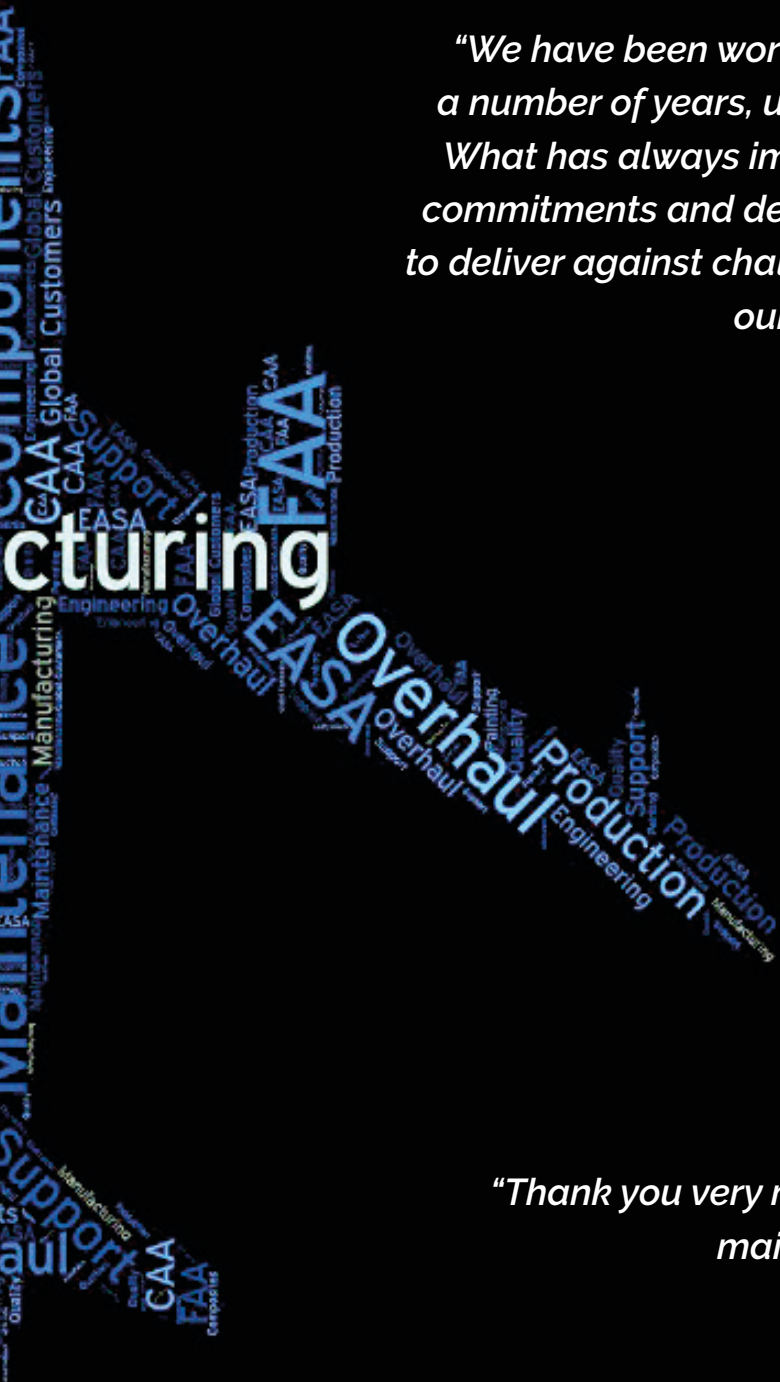
AER LINGUS

*"We will be using you guys a lot in the future, you have been a huge help!"*

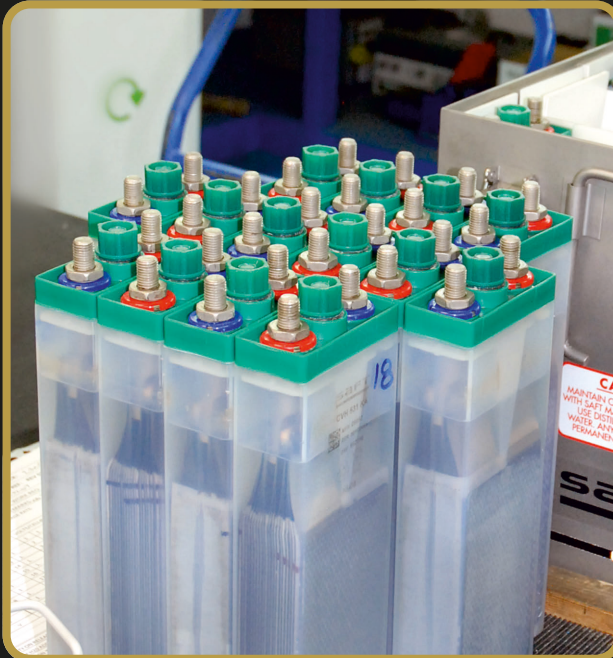
WEST COAST AVIATION

*"Thank you very much for your support and professionalism in delivering high quality maintenance in the weeks gone by to support our aircraft"*

SMBC



# COMPONENT REPAIRS & SUPPLY



## BATTERIES

Our UK Battery Service Division is equipped with the latest Intelligence chargers and superseders. Our Aircraft battery technicians carry out capacity checks, regular checks and overhauls to main and emergency batteries to ensure optimum performance and power.

We ensure all maintenance performed is strictly in accordance with the Component Maintenance Manual and under EASA Part 145 regulatory requirements.

**AOG CAP Check & Overhaul Available**

## RADOMES

In Accordance with the OEM Component Maintenance Manuals. Aeroco repair, refurbish and overhaul Radomes for a wide range of airlines and leasing companies, which can include structural repairs, replacement of internal and external laminates, replacement of honeycomb cores and flutes.

In addition, we offer refinishing of anti-static coatings and anti-erosion topcoats. Aeroco Group also offer a full inspection, repair and overhaul service on flight controls and Cabin & Cargo Doors.





## ENGINE NACELLES

Within our capabilities, we offer a range of repair, maintenance and refurbishment options for engine nacelles.

Ranging from inspection, defect rectification and painting our specialist technicians are able to support full EASA 145 Approval certification.

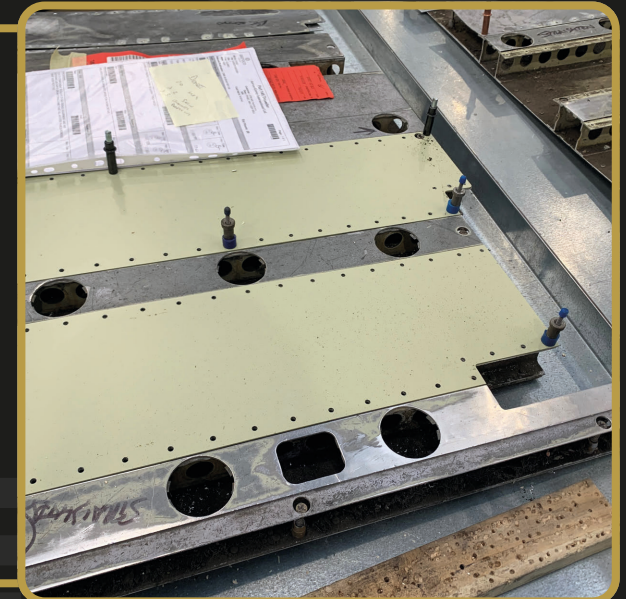
Our purpose built composite, paint and curing booths ensure the highest quality of work is achieved on the largest of components.

## METAL & COMPOSITE REPAIRS

In our Manchester facility, we have a full range of composite and metal workshops to support all types of repairs.

From Cargo Loading systems to composite partitions and doors, our expert engineering team can support all types of repairs.

Alongside our engineering team, we are able to offer full repairs IAW OEM Data or working alongside our DOA partners, develop and implement approved repair schemes.



# PARTS PRODUCTION APPROVAL

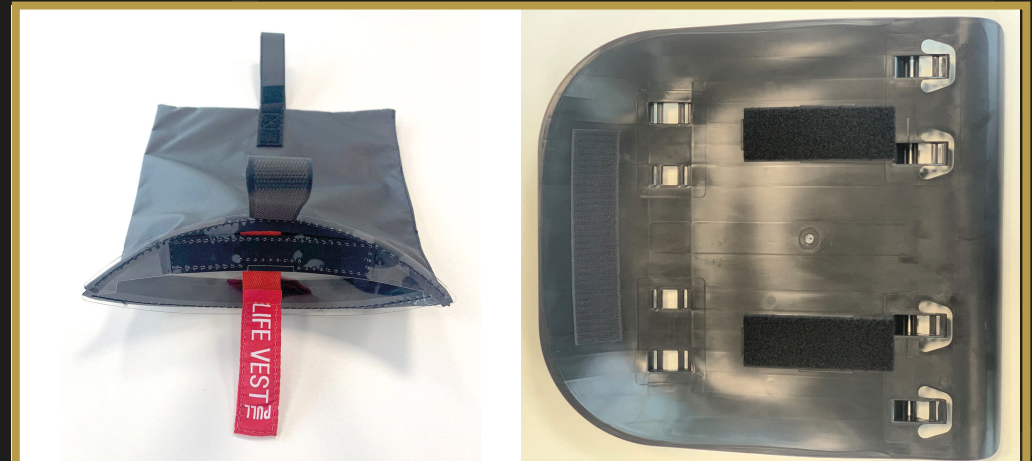
In accordance with its CAA Part 21 Sub Part G approval, Aeroco Group manufacture a range of aircraft parts, including cargo and cabin floor panels for both Airbus and Boeing fleets, carpets and cabin related components such as safety equipment stowage's, cabin windbreaks, dividers and various bracketry machine shop products. We also offer a quick and reliable service for the manufacture of airframe and engine lease plates.



## DECALS, PLACARD & LEASE PLATES

Aeroco Group provide the aviation sector with a range of graphic and registration products for all fleet types. With our longstanding experience and Quality Assured ISO9001 2015 certification, our graphics division are able to provide Decals, Placards & Selcal Plates with Form 1 certification or CofC.

We provide responsive, professional and timely services as standard, offering a range of capability that includes installation services at Airside and Hangar bases.



## CABIN & SEAT PARTS MANUFACTURING

With a team of skilled design and fabrication engineers, Aeroco Group offer a comprehensive solution for design, manufacturing and certification of cabin & seat parts. In conjunction with selected Design Organisations, we can provide solutions for new and replacement parts. All parts are released with a CAA Form 1 certification and IPC supplement for ease of installation.

Alternatively, working with supplied design data, we will produce to your specification and designs with full certification release

Working closely with numerous design organisations, Aeroco are proud of its flexible reputation and ability to back engineer prototype projects to ensure the customer receives the desired product.



## CNC CARPET & TRIM SHOP

High quality upholstery and carpets are vital for making the right impression for your passengers. It is important that they are kept in good condition and replaced when required. We provide the necessary experience using skilled technicians and CNC manufacturing technology.

Aeroco Group manufacture all types of soft furnishings including seat covers, carpets, foams, and a range of other services. Carpet kits are manufactured, supplied and fitted to all types of aircraft & overlapped with supply and fit services available through our dedicated installations teams.

FROM  
CONCEPT  
TO  
COMPLETION

DESIGN

CONCEPT

PRODUCTION

CERTIFICATION

# BASE & LINE MAINTENANCE SUPPORT

- DEDICATED AIRCRAFT RESPONSE TEAMS
- QUALIFIED ENGINEERS
- SCHEDULED/UNSCHEDULED MAINTENANCE
- AOG AND CABIN APPEARANCE SURVEYS
- EXTERIOR PAINT SERVICES
- MOBILE PAINT & COMPOSITE FACILITIES
- DEFECT RECTIFICATION
- AVAILABLE 7 DAYS A WEEK THROUGHOUT UK

Based at London Gatwick, London Luton, and Manchester, our experienced cabin fitters carry out cabin related surveys and rectification throughout UK airports.

Our team offer a range of services, from cabin inspections through to carpet & component installation service, offering complete cabin support during base and line maintenance.



## CABIN SERVICES

- Inspection Flooring
- On Wing Trim
- Flooring Installation
- Carpet, NTF & Coin Dot
- Galley Local Repairs & Component Fitment
- Seat Component Replacement
- Base Maintenance Cabin Support



## EXTERIOR PAINT & DECAL INSTALLATION

- Specialist Paint Technicians
- Exterior Touch Ups & Repairs
- Installation & Supply of Decals



## MOBILE PAINT & COMPOSITE REPAIR

- Mobile Paint & Composite Facility
- Qualified Expert Paint technicians
- Component Repaint & Repair
  - Overhead Hat Bins
  - Cabin Monuments
- Small Composite & Metal Repairs



AEROCO GROUP INTERNATIONAL LIMITED

Units 6-9  
Aurora Business Park  
Beacon Way  
Stockport SK3 0EF

Office  
+44 (0) 161 437 5556

Web  
[www.aerocogroup.com](http://www.aerocogroup.com)

Email  
[info@aerocogroup.com](mailto:info@aerocogroup.com)

